



What's New In



NEWSSCROLL 3.0



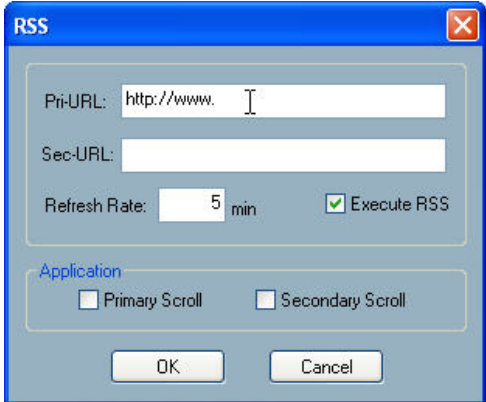
© Compix Media, Inc.
26 Edelman, Irvine, CA 92618
www.compixmedia.com

www.compixmedia.com



RSS Connectivity

You are now able to link two crawls with two independent RSS Feeds. Simply type in your URL and Refresh Rate, and NewsScroll will automatically apply the feeds directly into your crawls for instant, ongoing data. The below RSS menu is located inside the NewsScroll toolbars RSS section.



Second Logo

Add a second logo to your look. The logo can be placed anywhere on the screen, and has the ability to be animated or static as your primary logo. Both logos can change on-air, and turned off and on as needed.



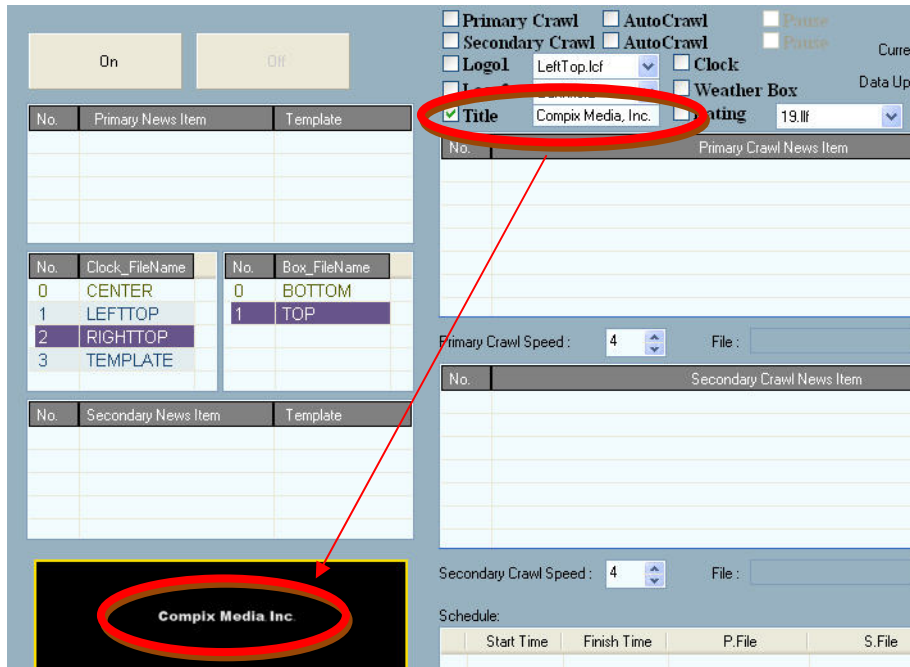
Rating Logo

Add a third static Rating logo to your look. The logo can be placed anywhere on the screen and is used mostly for rating shows.



Title

You can now apply a title anywhere on your screen. The Title is typed in NewsScroll directly giving you an instant access for last minute additions to your output.



Rollup Mode

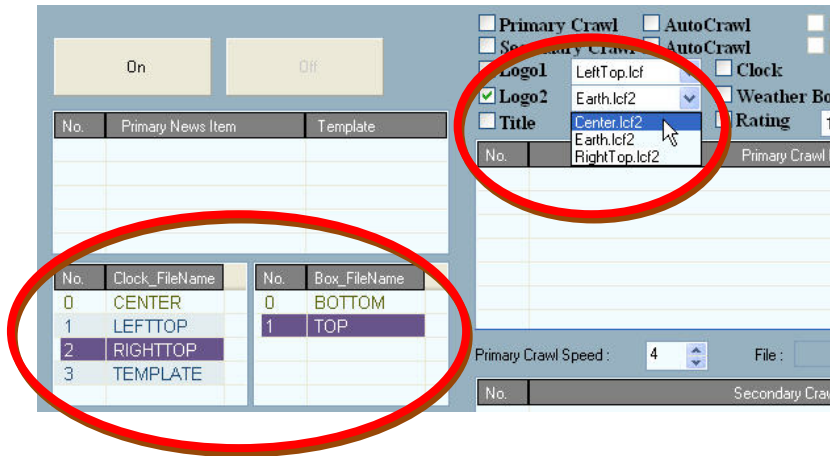
In addition to crawling your text, you are now able to display information one at a time in your lower third space. The feature is called Rollup Mode. After the prescribed sequence times out, it transitions automatically to the next sequence. This can happen to any one crawl, or both simultaneously. Each crawl in Rollup Mode can have its own Interval Time and Transition Speed.

Layer Mode

Manage all of your logos, and other information by easily moving them in the right place. The information can be grouped together or moved individually with your keyboard. All possibilities are laid out for a fluid sandbox approach.

Save Settings

You are now able to independently save your logos, crawls, clock, and your weather box. You can save their current position and other independent features for easy retrieval. After saving multiple clock templates or logos, you can easily pick and choose which you want for your look.



Master Fonts

Apply the same font type to all data within NewsScroll / RSS. After selecting your font, press OK and restart NewsScroll / RSS. All Primary, Secondary, Title, Weather Box and Clock features will be the same font. This is extremely useful for last minute changes you need finished now. The last item, Dialog, is for setting font types for the main NewsScroll / RSS selections on top. Now you can personalize your look and feel for how NewsScroll / RSS is viewed.

